



Yes, you can.[®]

Invacare[®] Typhoon[®] II

The Power of Motion

The *Invacare[®] Typhoon[®] II* is a high-performance power chair for active people. The **Centre Wheel Drive** feature offers outstanding indoor and outdoor manoeuvrability whilst the **Sure Step[®]** system provides excellent stability. Driving performance has been improved: the power chair can now easily handle uneven terrain and overcome obstacles even when driving backwards. **True Track[®]** is now available as standard on this wheelchair.





➤ **Ultimate Mobility**

The *Invacare® Typhoon® II* is the ideal partner for all situations, both indoor and outdoor due to its excellent manoeuvrability and impressive stability on uneven ground. Powerful, silent motors with **True Track®** functionality further improve driving control and performance.

➤ **Smooth Ride**

The modified and patented Walking Beam is an innovative application that lifts the front castors whenever the chair comes into contact with an obstacle in backwards and forwards direction. The result is an exceptionally smooth ride free from shocks or bumps.

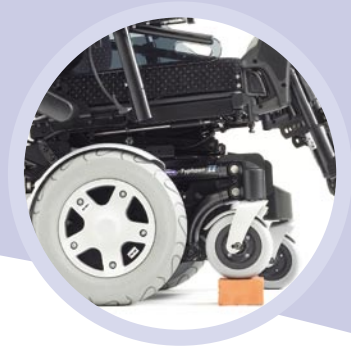
➤ **Variable Seating**

A wide range of seating options ensures the chair adapts to individual requirements. Seat, back and legrest angles can all be adjusted for optimum comfort. In addition to enjoying a smooth, stable drive, customers can sit and relax in comfort or recline the chair to change pressure distribution.

➤ **Stability & Safety**

The automatic **Stability Lock Mechanism** has been improved to ensure greater stability in acute driving situations (braking or down-hill driving). This prevents the chair from tipping over and provides safety when in the upright position.





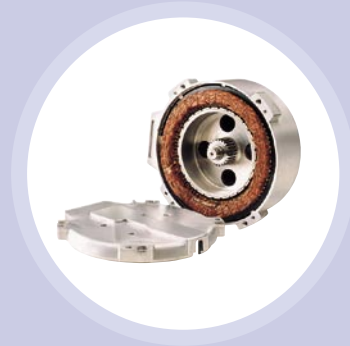
Walking Beam

Newly developed "Walking Beam" for improved driving over and around obstacles.



NEW

Improved Stability Lock



Powerful GB Motors

Powerful, smooth, silent driving, excellent steering control and **True Track®** functionality.



Increased traction

The new construction of the "Walking Beam" enhances the grip.



Easier Service

Simpler access to batteries and electronics in the front.



Easier Service

Simpler access to batteries and electronics. Rear shroud taken off.



Seat Lifter

A low seat height for easy access under tables, a higher position for reaching objects.

Features and Options



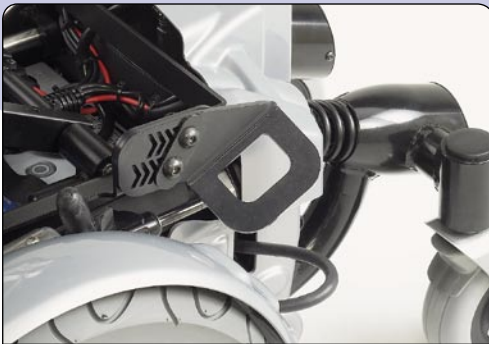
Electric Legrest

The elevating legrest with length compensation prevents the "push-effect".



Fixation Belt

Positioning belts for improved stability, Velcro waist belt (Standard), Buckled waist belt and H-belt as options.

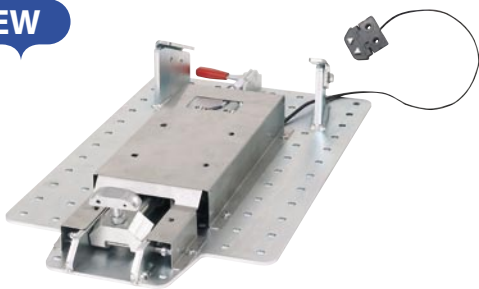


Car Fixation

Four point tie-down points allow safe transportation in a car.

* Crash tested according to ISO 7176, part 19.

NEW



Docking station

Attach the *Invacare® Typhoon® II* into a van, car or minibus for easy transportation.
Part Number SPI510997.



Advanced Control

The proven remote REM 24 SD with its elegant design, simpler menu and ergonomic fixation.

Features and Options



Standard Seat

Standard seat with foam cushion, complete with tension adjustable back and adjustable back rest angle for individual settings.



Contour Seat

Contoured upholstered seat combination for comfort and improved seating.



Flex Seat

Seat with contoured back and flexible lateral support for individual positioning.



Recaro Seat

Professional driver's seat for appearance, comfort and performance.



Junior Seat

Width 30 cm to 38 cm
Depth 32 cm to 41 cm.



Positive Seat Tilt

A reclining angle of 35° allows a relaxing position for the user. Transferring the body weight to the back helps to re-distribute pressure.



Reclining Back

An innovative geared reclining system provides a wider angle of adjustment (manual or electric).



Negative Seat Tilt

The seat tilt allows for many angle adjustments from a forward transfer (negative tilt) to a fully reclined, comfort position. Legrest dropped to ground.

Technical data

Standard-seat	44 - 48 cm	41 / 46 / 51 cm	-10° - 30°*1	48 / 54 cm*2	96 cm	w/o lifter: 45 or 47 cm *3 w/ lifter: 42 to 72 cm or 47 to 77 cm *3	65 - 69 cm*4
Contour-seat	44 - 53 cm	41 / 46 / 51 cm	-10° - 45°	64 cm*2	107 cm		65 - 69 cm*4
Flex-seat	39 - 53 cm	38 / 43 / 48 cm	-10° - 45°	55 cm*2	100 cm		65 - 69 cm*4
	S: 30 - 36*5 M: 36 - 42*5 L: 42 - 48*5	0° - 15° man. w/o lifter 0° - 15° electr. w/o lifter -5 - 35° electrical tilt	23 - 32 cm; 27 - 40 cm*2	116 cm*6 (w/leg rest) 93 cm (w/o leg rest)	85 cm footprint of castors	160 kg*7 w/o lifter 180 kg*7 w/lifter	150 kg (Std Seating)
	2 x 12V 60 Ah (C20)	R = 55 cm	7,5 cm	20%	2 x 500 W	6 km/h 10 km/h 12 km/h	50 km*8

*1 in 6 steps; option: pneum. / electr.

*2 measured from seat plate

*3 ground to seat plate, w/o seat cushion

*4 wheelbase 65 cm;

*5 measured from foot plate to seat plate

*6 leg rest at largest angle

*7 varies with configuration

*8 measurement according to ISO 7176

All measurements have been done under the Invacare®

standard test conditions, unless quoted differently;

User weight: 100 kg, battery: 60 Ah, speed version:

6 km/h, Std. Seat, tilt angle: 4°, seat height: 45 cm,

back rest angle 10°

Frame colours



Cherry Red



Pearl Night Blue



Black

All information quoted is believed to be correct at time of print.

Invacare® reserves the right to alter product specifications without prior consultation.



INVACARE® Limited
 Pencoed Technology Park · Pencoed · Bridgend CF35 5HZ
 Tel: +44 1 656 776 222 · Fax: +44 1656 776 220
 E-mail: uk@invacare.com · www.invacare.co.uk
 Sales Order E-mail: ordersuk@invacare.com

INVACARE® Ireland Ltd
 Unit 5 · Seatown Business Campus
 Seatown Road · SWORDS · County Dublin
 Tel. +353 1 8107084 · Fax +353 1 8107085
 Email: Ireland@invacare.com · www.invacare.ie